



DESCRIPTION

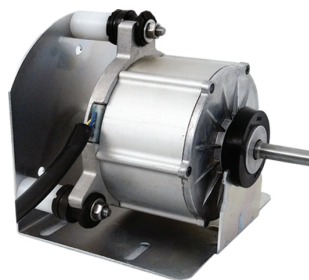
Marine Industries Organization is a designer and manufacturer company producing BLDC motors for household and mobility applications such as Air-Conditioners, E-Bikes, Scooters, and Electric Motor cycles. The products are customized for different applications with the strong technical support and after sales services. Having analyzed the market for the PM motors, the company started to design and manufacture high-pole machines with the competitive prices and quality, compliant with ISIRI 3772 and IEC 60034 standards. PM motors are characterized by the following advantages:

- Direct drive (Gearless)
- High Efficiency
- High power/Torque Density
- Maintenance-Free
- Compact Design
- Low Audible Noise
- High Performance in variable speed range

Electromotors(BLDC) Controler Cooler

Technical Specification

Power: 40 Watt
 Voltage: 20 Volt
 Frequency: 50 Hertz
 Efficiency: Up 80%
 RPM: 1800



Electrical Bike

Technical Specification

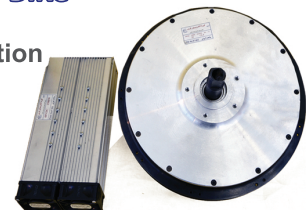
Voltage: 36 Volt
 Power: 350 Wat
 RPM: 500



Electrical Motor Bike

Technical Specification

Voltage: 60 volt
 Power: 1500 Watt
 RPM: 550



SPECIFICATIONS

Row	Electromotors Type	Uses	Voltage(V)	Output Power (W)	Speed (RPM)
1	Brushless (BLDC)	Cooler	220AC	400	1800
2	Brushless (BLDC)	Electrical Bike	36 DC	350	500
3	Brushless (BLDC)	Electrical Motor Bike	60DC	1400	550

