



## DESCRIPTION

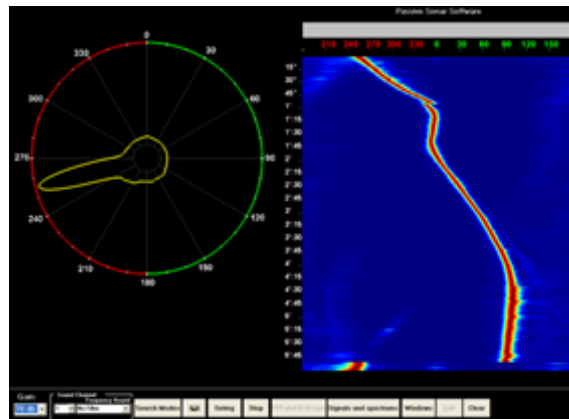
Sonar systems are main practical equipment to detect and track potentially hostile submarines and surface ships in ASW operation and surface craft operations in sea.

Midget Conformal Passive Sonar is designed and developed to be installed in small and medium weight submarines and take part in ASW operation.

The system consists of a curved array, which will be installed on the bow, electronic box and processing and monitoring console.

## FEATURES

- Electronic beam forming
- Wideband data processing
- Demon and Lofar algorithms are embedded
- Ppi and b-scope display
- Time and frequency monitoring of all staves
- Data saving and offline analysis
- Simultaneous detection and differentiation of 3 targets
- Installable on small and medium weight submarines



## TECHNICAL FEATURES

Horizontal coverage	240 degree
Vertical coverage	90 degree
Detection range	25 km
Angular accuracy	3 degree
Array diameter	1.5 m
Array height	0.4 m
Number of receivers	32
Weight	100 kg