

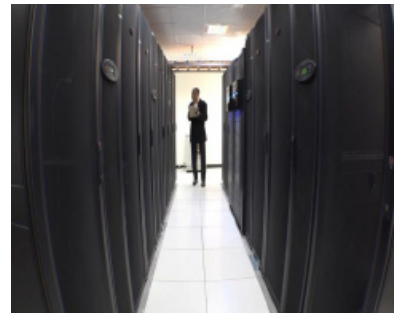
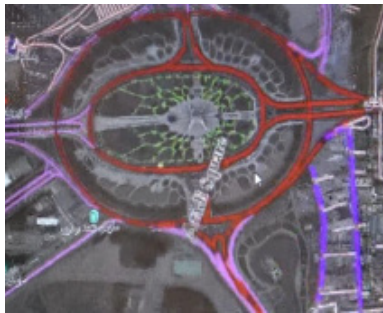
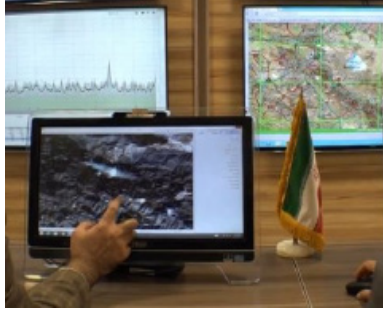


## Data Center



### GENERAL SPECIFICATIONS

- Offering the fastest data transmission rate.
- Installing only a single version of the necessary software on the server.
- Centralized and professional support of spatial data.
- Saving spatial data and providing high physical and electronic safety for this data type. Preventing of copying with redundancy and data replication.
- Providing the highest processing rate of spatial data at one location.



## Department of Commerce

### GENERAL SPECIFICATIONS

- Supervising projects performed by partner companies.
- Performing all printing related affairs.
- Getting to know stars, celestial objects and constellations using the newest 3D systems in Geographical Organization Planetarium.
- Providing the necessary equipment and training to implement different production lines of maps and presentable geomatics products.
- Training and performing different technical computations.
- Performing executive, consulting and supervisory projects in the field of geomatic sciences.
- Selling technical and engineering services, digital and paper maps, aerial and satellite data and images, books and magazines on geomatic sciences, mapping equipment, atlases, globes, and etc.

